



BROWSE

goat news from Ontario

Ontario Goat Breeders Association
PO Box 1330
Fenelon Falls, ON K0M 1N0
Tel 866-311-6422 (toll-free)
www.ogba.ca

OGBA Directors - 2007

President: Garry Claassen (District 3)
RR 2, Teeswater, ON N0G 2S0
Phone 519-357-4422 Fax 519-357-4544
Email claassen@ogba.ca

Past President: vacant

Treasurer & Secretary:
Sandy Pearce (District 1)
142 Walkers Rd, RR 2
Fenelon Falls, ON K0M 1N0
Phone 705-887-3073
Email thekids_and_ewe@sympatico.ca

Vice-President:
Tobin Schlegel (District 3)
3668 Perth Rd 104, RR 1
Tavistock ON N0B 2R0
Phone 519-655-9975 Fax 519-655-9921
Email tobin@cwisp.ca

Directors at Large:
Lucy Berger (District 1)
RR 2, Hastings, ON K0L 1Y0
Phone 705-653-4819
Email berger@ogba.ca

Dino Iannuzzi (District 2)
128 Christian Road, RR 1
Bloomfield ON K0K 1G0
Phone 613-393-3999
Email dino@netwerx.com

Danielle Browning (District 3)
55448 Nova Scotia Line, PO Box 473
Port Burwell ON N0J 1T0
Phone 519-874-4868
Email info@essandea.com

Jim Tindall (District 4)
6390 Owen Rd., RR 1
Uxbridge, ON L9P 1R1
Phone 905 852-9966
Email jim.tindall@sympatico.ca

Committee Chairs:
Dairy - Dino Iannuzzi
Chevon - Lucy Berger
Fibre - Allison Taylor

Districts:
District 1: 705/807 area codes
District 2: 613 area code
District 3: 519 area code
District 4: 905/289/416/647 area codes

Veramix® Sponges Off the Market

*Jocelyn Jansen, Animal Health & Welfare, OMAFRA
Paula Menzies, Department of Population Medicine, OVC*

Veramix® sponges (Pfizer Canada), a popular hormone product used for the induction and synchronization of estrus in sheep and goats, are no longer available for sale due to a loss of the third party supplier. Veramix® sponges (medroxyprogesterone acetate) have been an integral part of the year round production of small ruminant meat and milk products through the induction of estrus out of the natural breeding season. Pfizer Canada, OMAFRA, OVC and the small ruminant industries are working with the Veterinary Drugs Directorate (VDD) in Ottawa to provide access to an alternative product for small ruminant producers in Ontario. We hope to have more information for veterinarians and producers within the next month.

Canadian Caprine Classic, November 16 - 17, 2007

submitted by Tobin Schlegel

The Canadian Caprine Classic has come and gone for another year. Over 250 people from across Canada and the US to attend the day and a half event. Friday's industry presentations drew a crowd of close to 100 and covered the theme "Growing Together", a reflection of the vast opportunities in the Canadian goat industry. Eight speakers expanded on the theme, with talks revolving around the development of successful goat and goat related businesses. Saturday's CGS sanctioned dairy show, CMGA East National Boer Goat Show, youth showmanship classes and the Canadian Caprine Classic Angora goat show drew over 300 entries! Results are available on the event's website, www.caprineclassic.ca. Video footage of the competitions will (hopefully) be available on Youtube in early February 2008, search for the "Canadian Caprine Classic". Thank you to all those who supported the event either financially, with entries, or simply by attending as spectators, the event could not happen without so much support.

Building Sustainable Organic Business

27th Guelph Organic Conference, January 24 - 27, 2008, Guelph, Ontario

Canada's premiere organic event takes place at the University of Guelph and includes a trade show and organic food expo. Admission to the expo is free, fees for other sessions are individually priced. Speaker topics include organic crop production, organic livestock production and welfare, organic business strategies, organics, climate change and a clean environment, and profitable and sustainable organic farms. For information, email organix@georgian.net, phone 705-444 -0923, or visit www.guelphorganicconf.ca .

Visionary Farmers and Consumers - How Organics is Transforming Your World

February 16, 2008, Conference Centre, 89 Chestnut St., Toronto

The keynote speaker is Helge Hellberg of Marin Organic. Marin County is well on the way to becoming the first all organic community in North America. There will be panels on topics including: Where's the local in organic? Organic integrity guaranteed. Visionaries leading the way! Cost is \$65 (\$85 after January 15) and \$55 for COG members. More information and registration at the website www.cog.ca/toronto .

OnTrace Agri-food Traceability

OnTrace is an industry led corporation created to lead food traceability programs and initiatives in the province of Ontario. OnTrace will deliver traceability solutions that will

CNGF Rep for OGBA Garry Claassen
Phone 519-357-4422 Fax 519-357-4544
Cell 519-357-5744 Email claassen@ogba.ca

enable the agriculture and agri-food industry in Ontario to become more innovative and competitive and it will strengthen the capacity of industry and government to respond to emergencies related to agriculture and food.

There are three fundamental pillars to traceability: knowing what the product is, where the product is, and when the product moves to another location. The first task that OnTrace is to deliver is an agri-food premises registry by the end of 2007.

OnTrace completed a small-scale working model of the Ontario Agri-food Premises Registry (OAPR) infrastructure in September. The pilot project included four counties (Niagara North/South, Waterloo, and Middlesex) and a number of producer groups including the Ontario Tender Fruit Producers' Marketing Board, Chicken Farmers of Ontario, Turkey Farmers of Ontario, the Egg Farmers of Ontario and the Ontario Broiler Hatching Egg and Chick Commission. OnTrace is now building the infrastructure to encompass the entire province.

The premises registry process does two basic tasks. It identifies a location or premises, using publicly available land parcel and business data. Then it characterizes that premises with the activity taking place and (ideally) some key contact information for emergency management. OnTrace then allocates a unique identifier to the premises.

Only validated premises are given a unique identifier. A premise

is valid when location, type of operation, contact and type of species/commodity are authenticated by OnTrace and can be confidently identified and characterized.

Premises identification assists industries and governments in managing an animal health or food safety issue by geographically referencing traceability information. Premises information allows officials to quickly define which areas are affected by a disease outbreak or food safety event, keeping markets open for unaffected producers.

We all know that infectious animal and plant diseases can have a devastating economic effect as a result of loss of animals or crops and the potential continuing loss of market access. In many cases, the financial cost of recovering an agricultural sector's reputation can be greater than the costs of eradicating the disease.

Benefits derived from OnTrace traceability initiatives to the producer include strengthened customer confidence in food safety, improved international trade and brand credibility, improved market access, and reduced producer losses arising from disease management costs and loss of sales.

For questions or additional information on agriculture and agri-food traceability initiatives in Ontario, please refer to the OnTrace website at www.ontraceagrifood.com or call Sara Avoldo, executive assistant/communications specialist for OnTrace at 519-766-9292.

Improve and enhance your goat management
PRODUCTION MANUALS

Manual #1 - Let's Make a Decision: Aimed at the new or novice goatkeeper, or anyone thinking about raising goats, this manual has everything you need to know, starting with selecting stock to record-keeping charts. It is written by goatkeepers, for goatkeepers, in terms that everyone can understand.

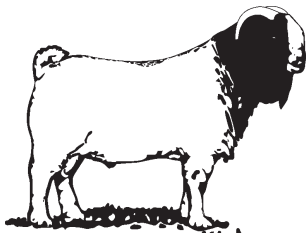
Manual #2 - How the Industry Grows: This manual has been produced for the more experienced goatkeeper. It is a more in-depth look at products and marketing. Topics include: grading meat goats, assessing a live goat's body condition, Grade A requirements for shipping milk, and faults in raw mohair. The writers of this manual have over 50 years combined experience in raising goats.

Price per manual: (Prices are in Canadian funds)
OGBA Members \$25.00 Non-Members \$35.00

Shipping is \$5 extra per manual, or arrangements can be made for pick-up in your district. Order manuals through the OGBA Secretary.

The objectives of OGBA are:

1. develop, provide and circulate sound and objective information about goats;
2. assist goat owners in the improvement and development goat breeds;
3. encourage and promote the advancement of the goat industry and new technologies such as AI and embryo transplant;
4. assist in the development of the meat, fibre, miniature, and dairy products markets in Ontario;
5. promote the development, sale, and export of agricultural products relevant to the goat industry;
6. provide educational opportunities related to agriculture and rural life relevant to the goat industry;
7. work co-operatively with provincial and national livestock groups for the advancement of the goat industry.



**CANADIAN
MEAT GOAT
Association**

OFFICE:

Box 314
Lancaster, ON K0C 1N0

www.canadianmeatgoat.com

Ph 613-347-1103
Fax 613-347-1105
registrar@canadianmeatgoat.com

CMGA Executive Directors

President - Kerry O'Donnell Ph/Fax 306-742-2050 kod@sasktel.net
Past President - Stan Johnston Ph 403-995-4532 Fax 995-4435 stanjo@shaw.ca
Vice Pres. - Guenette Bautz Ph 306-367-2404 Fax 367-2403 bautzfarm@sasktel.net
Secretary - Jennifer Moore Ph 905-729-4231 jennifer@stonemoore.ca
Treasurer - Bonnie Laman Ph 905-772-0697 ablaman@vaxxine.com

CMGA Directors at Large

Danielle Browning Ph 519-874-4868 info@essandea.com
Pat Farquhar Ph 204-842-3846 info@spruceboers.com
Catherine Michaud Ph 418-887-7135 Fax 418-887-7143 chevroie@globetrotter.net

CMGA Regional Representatives

Quebec West - Cécile Gascon Ph 450-225-4663 alagrobarts@hotmail.com
Ontario - Gerda Huson Ph 705-428-5336 breezyacres@sympatico.ca
Saskatchewan - Brenda Trithart Ph 306-697-3201
Darlyne Hoberg Ph 306-771-4565 Fax 771-4556 northeden@sasktel.net
Alberta - Merna Gisler Ph 403-227-2596 Fax 227-3176 gislerbg@telusplanet.net
Wendy Phillips Ph 780-829-2459 philcold@telusplanet.net